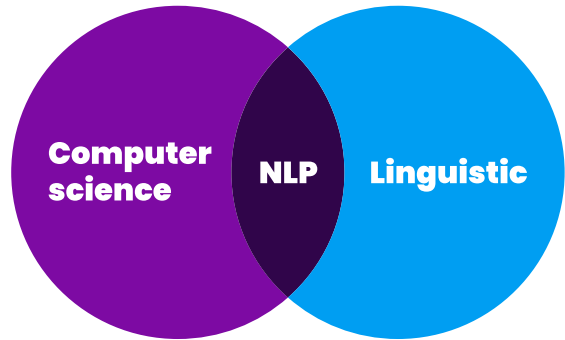




The success of a company depends on the decision to put the right employees in the right roles at the right time. With our AI-based diagnostics, we give HR a powerful tool to make the best decision - data-driven, scientifically sound, visually engaging and easy to communicate.

The technology

The success of a company stands and falls with the decision to put the right employees in the right roles at the right time. With Zortify's AI-based diagnostics, HR is given a powerful tool to make the best decision - data-driven, scientifically sound, visually engaging and easy to communicate.



Zortify's backbone



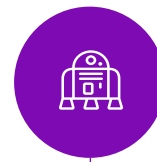
People Analytics



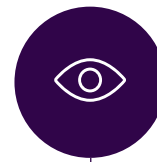
Organisational Psychology & HR Consulting



Data & Computer Science



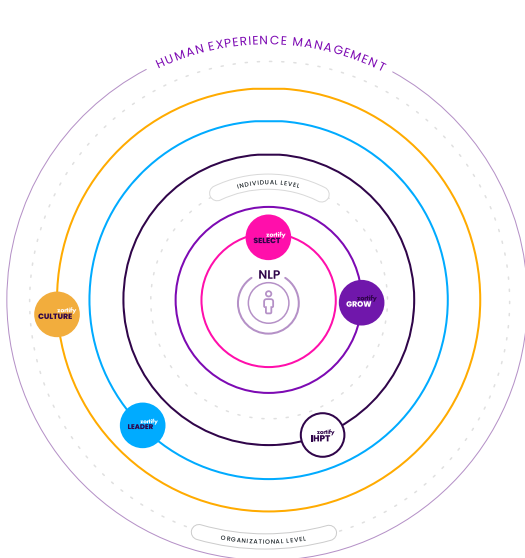
Natural Language Processing



Visual Computing

Product Lifecycle

In a fast-changing working environment, people crave connections, transparency, and a sense of community. Human Experience Management (HXM) plays a key role in creating this unique experience for employees. Our NLP product range covers the whole lifecycle of people in a company along the key elements of HXM with a human-centric approach. These deep insights help companies understand their employees better.



Select the right people for each job by objectively analyzing character and personality traits without human-bias risk.



Develop your talents and executives according to their individual capabilities and requirements with a focus on soft skills instead of mere productivity.



Assemble high-performance teams based on transparent expectations and common goals nourishing trust as well as individual strengths.



Create a constructive feedback culture with a transparent dialogue between team members and executives.



Measure and shape your corporate culture by addressing hidden topics and pain points that you were unable to assess until today.

Our partners



Salonkee

GANT



SENEC



LUFTHANSA GROUP



Roman Gaida
Head of Division of the Mechatronics CNC
Europe Division at Mitsubishi Electric Europe

Through cross-hierarchical and cross-functional collaboration, we were able to increase our efficiency as a division by more than 25 percent. A higher degree of agility and the increased value chain orientation across departmental boundaries have contributed significantly.



ada

Miriam Meckel
CEO & Co-Founder of ada Learning GmbH

Using Zortify's cutting-edge technology, ada is able to deliver customized groups, live sessions to our fellows and educational program. Moreover, we are able to provide our partner organizations with direct insights on how their employees work with each other.

About us



Founded in 2018 in the heart of Europe, we strive for better decision-making based on artificial intelligence. We are considered to be one of the most innovative and promising deep tech companies from Luxembourg where experts from all over the world find an inclusive and inspiring working environment. Our Zortify products are based on the latest applied research and practical expertise in Data & Computer Science, Natural Language Processing (NLP), visual computing, psychology, and people analytics to push decision-making to the next level.

- **Technology Made in Luxembourg**
- **Rising HR-tech award 2022**
- **28 Zortify team members**
- **16 nationalities speaking, 17 languages**
- **Academic backgrounds in linguistics, data & computer science and (org.) psychology**

Let's keep in touch!



Contact us now!



Sonja Becker

Sales & Business
Development Manager

sonja@zortify.com